

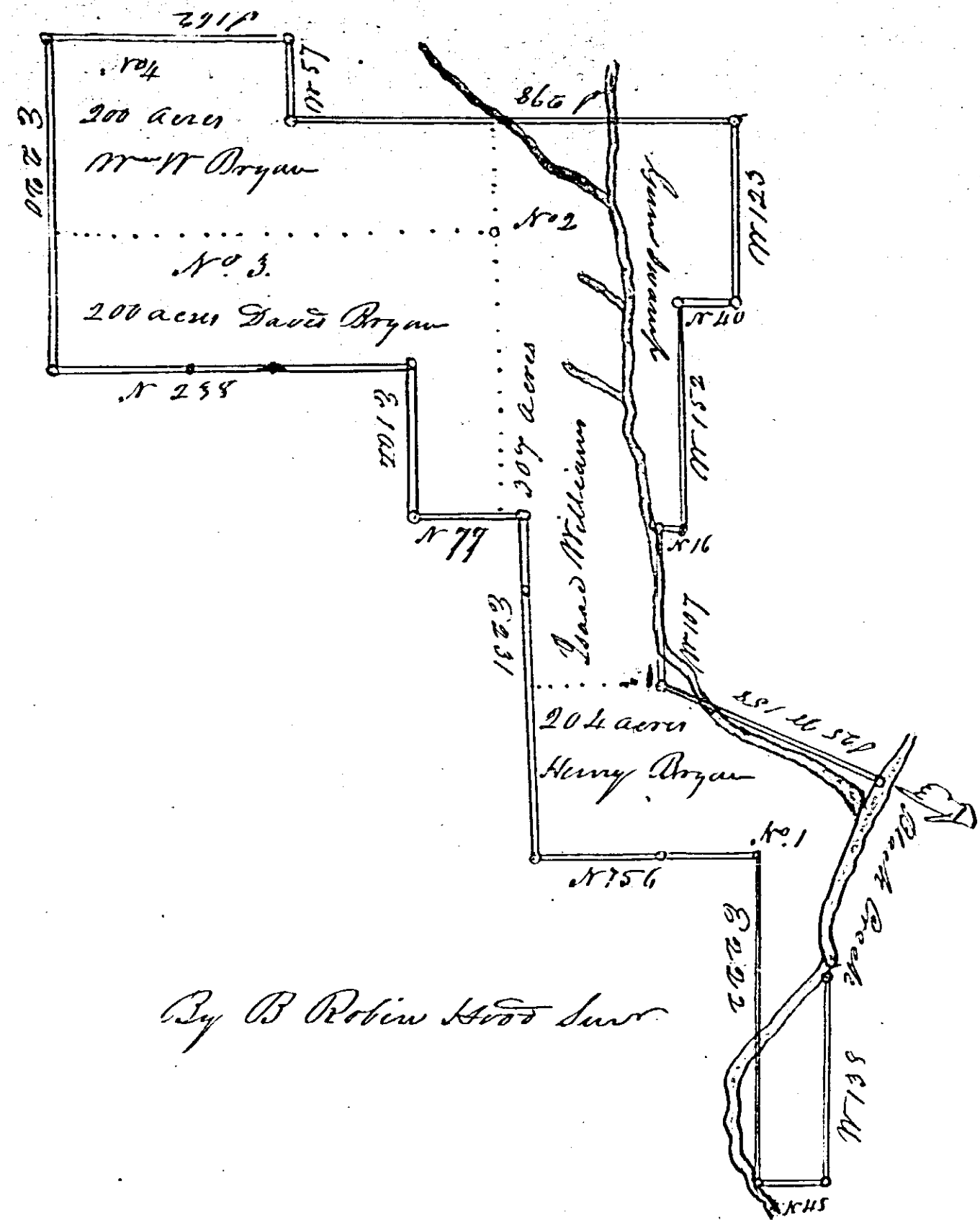
at a Small Sweet Gum Picket Erwin Earps Corner on Buffalow runs her line East to a pine in Woods line then his line 144 pole to a Black Erwin Earps corner then his line West to a stake (Gum & Two Ashes point) on Buffalow then up the Meanders of Buffalow to the Begⁿ Containing One Hundred and Sixty three acres represented in the plan by N^o 4.
 Begⁿ for Erwin Earps at a stake (Gum and Two Ashes pointed) Nancy Moddards Corner on Buffalow runs her line East to a Black in Woods line then his line 144 pole to a stake Dolly Earps corner then with her line West to a persimon tree on Buffalow then up the Meanders of the High Water mark to the Begⁿ Containing One Hundred and Sixty three acres represented in the plan by N^o 3.
 These Four foregoing lots is the land Jonathan Earps Dec^d bought of Joseph Wilders Heirs including his wifes part. - Begⁿ for Dolly Earps at a Persimon Tree on Buffalow Erwin Earps Corner runs his line East to a stake his corner in the back line then 140 pole to a stake in John Heimants line then with his line N 178 pole to a Black his corner then his line 140 pole to a stake Joseph and Samuel Shaws Corner then with their line West to a small Sweet Gum on Buffalow then up the Meanders of High Water Mark to the Begⁿ Containing One Hundred and Fifty acres as represented in the plan N^o 2 being the land she bought of Carpenter & Wife Catharine and Two fifths of Shaws right who was Heir of Joseph Wilder &c. - Begⁿ for Joseph and Samuel Shaw at a Small Sweet Gum Dolly Earps corner on Buffalow runs her line East to a stake her corner in John Heimants line then his line 140 pole to a pine his corner then his line N 204 pole to a poplar on Buffalow then up the Meanders of high Water Mark to the Begⁿ Containing Fifty acres represented in the plan N^o 1 being two fifths of the land their Mother was intitled to as Heir of Joseph Wilder. - In Testimony whereof we have hereunto set Our hands & Seals this 20th day of May 1820

W Robin Hood Seal
 Geo. Gully Seal
 Elias Barnes Seal

State of North Carolina
 Johnston County

May Term 1820
 Then was this report returned and Confirmed
 and Ordered to be Enrolled and Registered

Enrolled in the Clerk Office of said County in Book
 D. Page 29
 Wm Sanders Clk



By B Robin Hood Sur

In Obedience to an order of the County Court of pleas and Quarter Sessions issued June 7th 1820. We the subscribers having been duly sworn have laid off and allotted to each of the Heirs of Genl. Henry Bryan agreeable to the J^d order the following Lots of Land as the above plan will represent. -

Begⁿ for Henry Bryan at a Black Gum on the run of Black Creek Josiah Johnston Corner runs his line S 25 N 158 pole to a stake his corner then S 90 pole to a Hickory then E 115 pole to a stake and three Black Pines Porrels Corner then his line N 94 pole to a maple then the same course 66 pole to a pine at the end of Indigo point then E 252 pole to a stake then N 46 pole to Black Creek Mr W Bryan line then up the course of the creek 30 pole to Mr W Bryan corner then his line N 45 pole to a stake Benj Saxeester Corner then along Langston line N 192 to a Black Gum on the run of said Creek his & David Ametts corner then up the Meanders of the creek to the Begⁿ Containing Two Hundred and Four acres as represented in the plan N^o 1. Except the