

lower end of the plan which we took from the patent as it run being a 1st acre patent granted to Hardy Bryan being Thirty Dollars seventy five cents less than his proportionable share.

Beqr. for Isaac Williams at a stake Henry Bryan corner runs Josiah Johnston line N 107 pole to a pine his corner then his line N 16 pole to a stake his corner then Johnston line N 152 pole to pine his corner then his line N 40 pole to a pine his corner then his line N 123 pole to a stake his corner then his line N 144 pole to a stake D. Gunn N. W. Bryan's corner then his line and David Bryan's line E 265 pole to a D. Shack then N 18 pole to a Post oak then E 115 pole to a Hickory Henry Bryan corner then with his line to the Beqr. containing Three Hundred & seven acres as the plan will represent by N 2 being Nine Dollars & seventy five cents less than his proportionable share.

Beqr. for David Bryan at a D. Shack Isaac Williams' corner runs his line N 170 pole to a stake N. W. Bryan's corner then his line S 296 pole to a post oak his corner then E 88 pole to a stake Reuben corner then his line S 90 pole to a white oak then the same course 148 pole to a D. Shack down then E 102 pole to a Hickory then north to the beqr. containing Two Hundred acres as represented in the plan by N 3 being fifteen Dollars Twenty five cents more than his proportionable share.

Beqr. for William W. Bryan at a stake in Isaac Williams' line runs his line N 76 pole to a stake D. Gunn his corner in Johnston line then with his line S 134 pole to a pine then N 57 pole to a pine then S 162 pole to a pine near Burnel then E 134 pole to a post oak David Bryan corner then with his line north to the Beqr. containing Two Hundred acres represented in the plan N 4 being Twenty five Dollars Twenty five cents more than his proportionable share. — In Testimony whereof we have hereunto set our hands and seals this 11<sup>th</sup> Day of August 1820

Bryan Smith Seal  
John Wood Seal  
D. Bell Seal  
Benjamin Bell Seal

State of North Carolina  
Johnston County

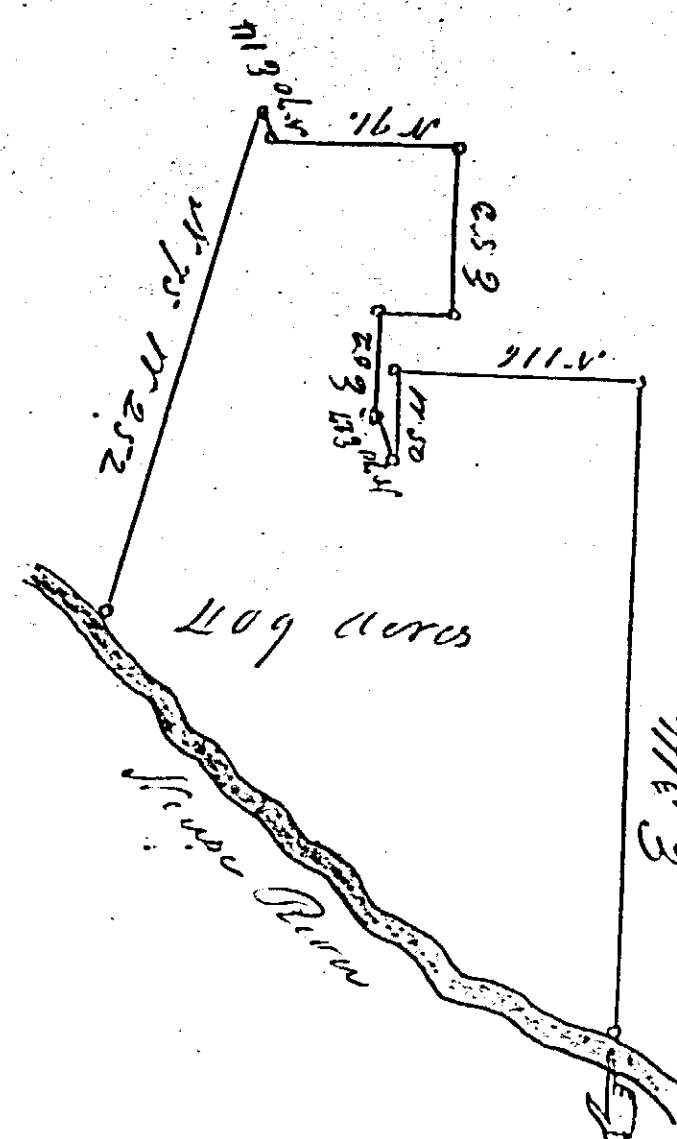
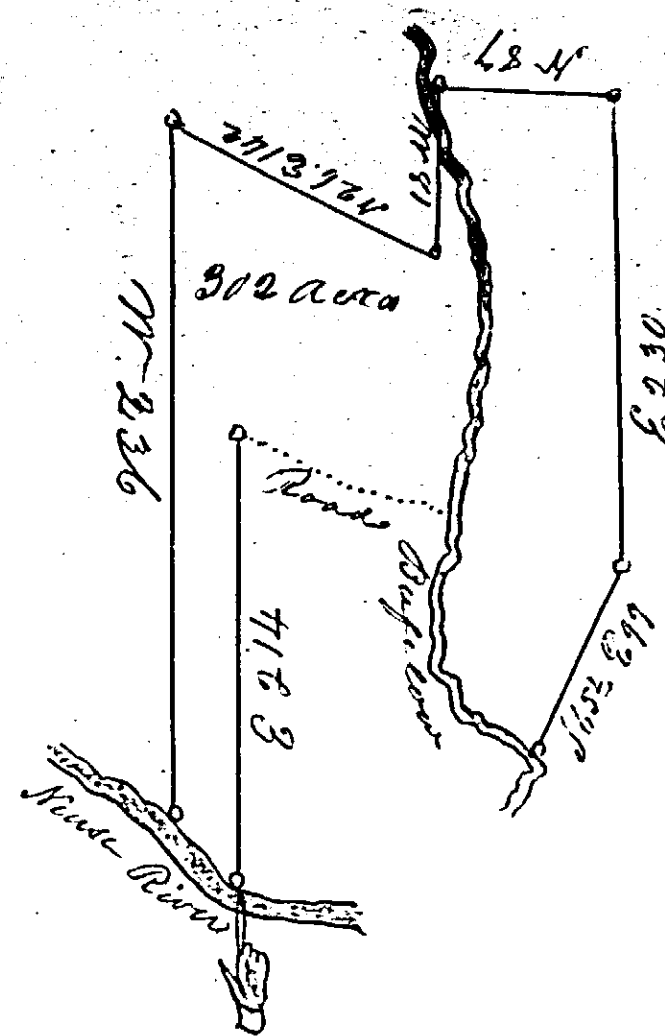
August Term 1820

Then was this report returned & confirmed and ordered to be enrolled and Registered

A. M. Sanders Clk

Enrolled in the Clerk's Office of said County in Book B page 31

A. M. Sanders Clk



In Obedience to an order of the County Court of pleas & Quarter Sessions held for the County of Johnston issued the 20<sup>th</sup> October 1820 we the subscribers having been duly summoned and sworn by the sheriff have Laid off and allotted to Elizabeth Ruple Wife of William Ruple formerly the Widow of John Stevens her Dower in the lands belonging to the Estate of the late John Stevens Dec'd as the above plans will represent —

Beginning at a Hickory Reuben Sanders' corner on the River Bank 31 pole below Earl Granvilles line and runs Sanders' line E 214 pole to a stake on the road then the meanders of the road to Bufflow then down the meanders of Bufflow to the corner of the Town Commons then the Commons line E 652 E 99 pole to a post the corner then E 230 pole to a pine in Dees' line then his line N 87 pole to a white oak in Bufflow his corner then his line N 81 pole to a post oak his corner then his line N 26 E 142 pole to Granvilles line then his line N 326 pole to the River then down the meanders of the River to the Beqr. containing Three Hundred & Two acres as One of the above plans will represent — Also one other Tract of Land Beqr. at a Beach on the River Bank and runs E 314 pole through Bear Harbor to a pine then N 116 pole to a pine then N 50 pole to the line of the Slaughter Land then with that line N 70 E 27 pole to a D. Shack the corner of the half of the 90 acre patent then E 52 pole to a large pine in a meadow then S 36 pole to a stake then E 83 pole to a stake Melkisons corner then his line N 91 pole to a stake then with Melkisons line N 75 N 252 pole to a white oak down on the Bank of the River then down the meanders of the River to the Beqr. containing Four Hundred and nine